



**RADHE KRIPA**  
HOUSING AND INVESTMENT Pvt. Ltd.  
ADARSHNAGAR BIRGUNJ NEPAL

# RADHE KRIPA HOUSING SOCIETY

BIRGUNJ NEPAL



DEVELOPEMENT

AMENITIES

RESIDENCES

LOCATION

DEVELOPER

## LIVING IS BUT THE ART OF KEEPING YOURSELF FIT AND DELIGHTED!

---

RADHE KRIPA CRAFTS FOR YOU AN ACCESS TO THE LEGENDARY SERVICES AND AMENITIES WITHIN THE FINEST LOCATION, DESIGN AND CONSTRUCTION THAT BRINGS FOR YOU FITNESS AND MUCH MORE.

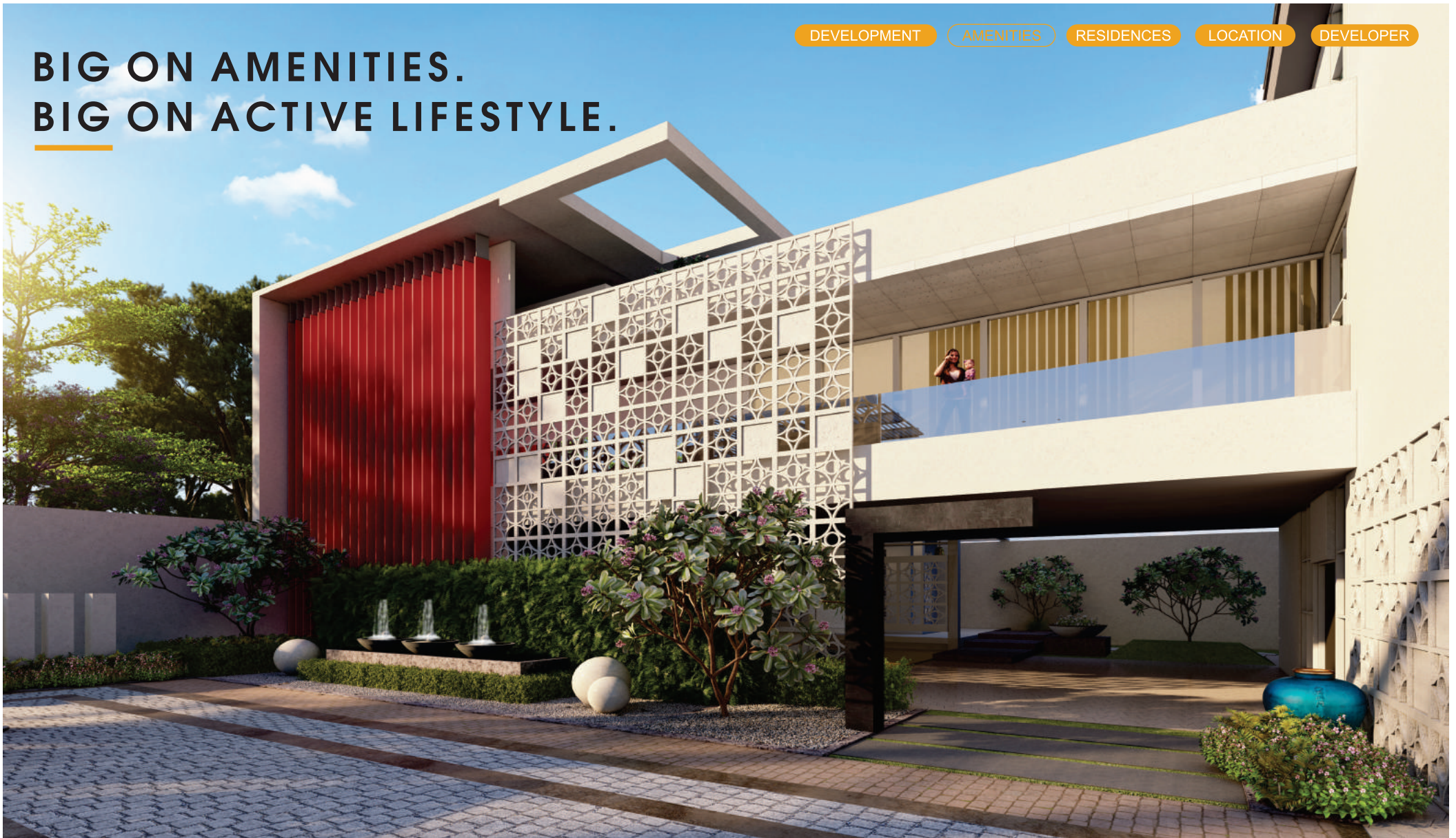
BE IT AN OUTDOOR TERRACE TO SPEND A DINNER DATE, OR A CLUB TO PARTY WITH YOUR CREW; WE HAVE ROOM FOR EACH ONE OF YOU.

WAKE UP TO THE SUNRISE HUES AND GIVE YOURSELF AN ADRENALINE RUSH WITH A GAME OF BILLIARDS OR SWIM IN THE BLUES FOR A PERKED UP DAY AT WORK.

WITNESS ALL THESE MODERN INNOVATIONS AND VARIOUS OTHER THAT HAVE BEEN STYLED FOR YOU!



# BIG ON AMENITIES. BIG ON ACTIVE LIFESTYLE.

[DEVELOPMENT](#)[AMENITIES](#)[RESIDENCES](#)[LOCATION](#)[DEVELOPER](#)

RADHE KRIPA TAKES COMMUNITY LIVING TO A WHOLE NEW LEVEL.  
TAKE A DIVE INTO THE SWIMMING POOL OR CHALLENGE YOUR NEIGHBOUR TO A GAME OF BILLIARDS OR  
SIMPLY LOUNGE WITH FAMILY AND FRIENDS AT THE THEATRE.  
WHATEVER YOUR MOMENT OF JOY, THE RK CLUB IS WHERE YOU'LL FIND IT.



# BIG ON AMENITIES. BIG ON ACTIVE LIFESTYLE.

GROUND FLOOR OR CLUB HOUSE  
IS LOADED WITH

SWIMMING POOL

KIDS SPLASH POOL

MANDIR





DEVELOPMENT

AMENITIES

RESIDENCES

LOCATION

DEVELOPER

## BIG ON AMENITIES. BIG ON ACTIVE LIFESTYLE.

**SPORTS ROOM** LOADED WITH  
BILLIARDS TABLE, CHESS TABLE,  
CASUAL BAR AND MUCH MORE



# BIG ON AMENITIES. BIG ON ACTIVE LIFESTYLE.

SECOND FLOOR IS ALL ABOUT

## THEATRE ROOM / PART HALL

WITH PANTRY FACILITY & PRIVATE  
RESTROOMS

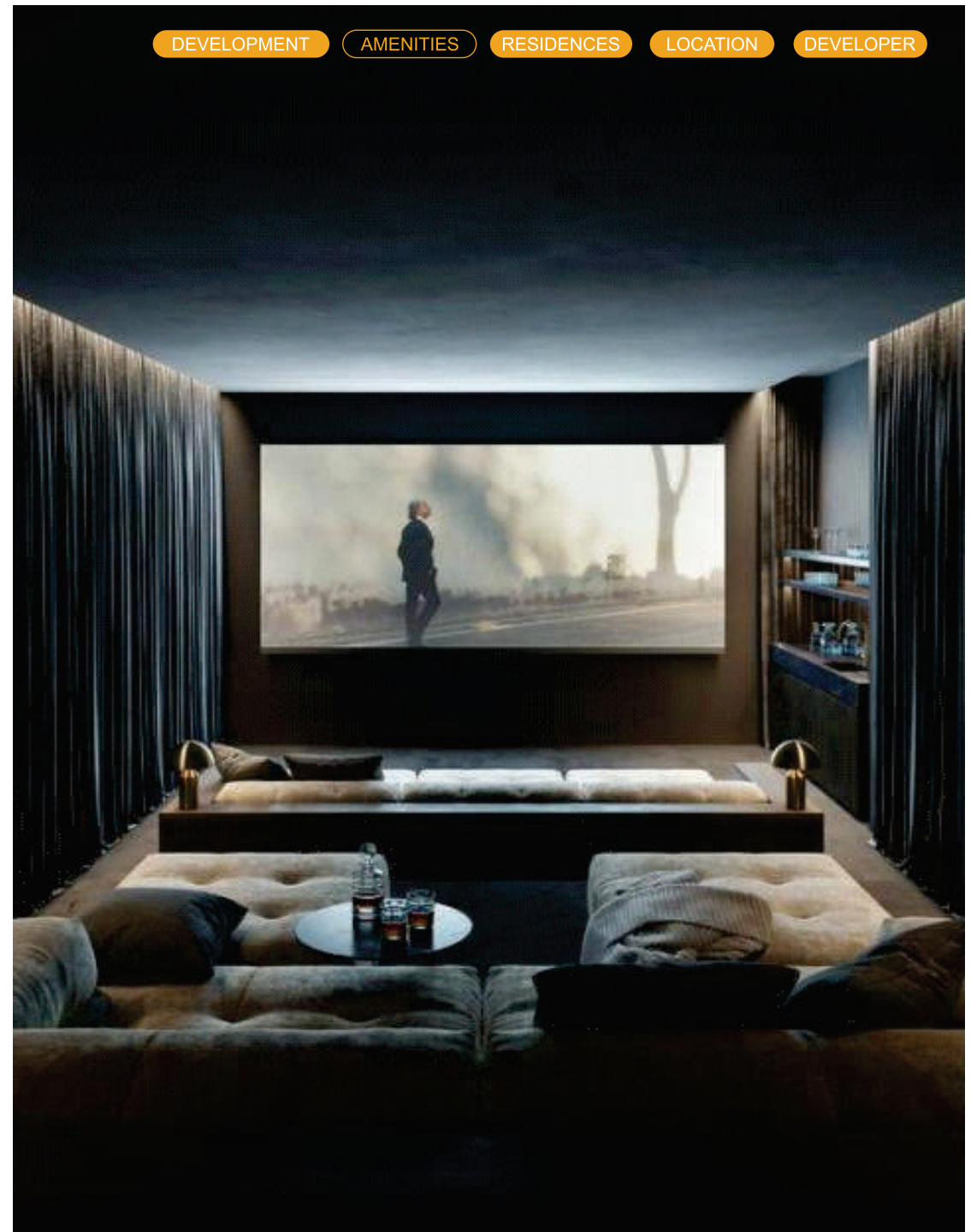




**BIG ON AMENITIES.  
BIG ON ACTIVE LIFESTYLE.**

## **THEATRE ROOM / PART HALL**

WITH PANTRY  
FACILITY & PRIVATE  
RESTROOMS



**RADHE KRIPA**  
HOUSING AND INVESTMENT PVT. LTD.  
ADARSHNAGAR BIRGUNJ NEPAL

# RADHE KRIPA HOUSING SOCIETY

## RADHE TOWER

### COMMUNITY CENTER FIRST FLOOR

- ENTRANCE FOYER
- RECEPTION
- COMMUNITY HALL
- LOUNGE
- OUTDOOR SEATING
- OUTDOOR DECK FACING MANDIR
- 12 SEATER CONFERENCE ROOM
- GUEST ROOM -1
- GUEST ROOM -2
- KITCHEN
- RWA OFFICE
- HE TOILET
- SHE TOILET

DEVELOPMENT

AMENITIES

RESIDENCES

LOCATION

DEVELOPER





# RADHE KRIPA HOUSING SOCIETY

## RADHE TOWER

### FLAT R1, R3, R5, R7, R9 & R11

#### UNIT TYPE 'A' 4BHK

##### 1 MASTER BEDROOM

WITH ATTACHED TOILET, DRESSER & BALCONY

##### 2 BEDROOMS

WITH ATTACHED TOILET & BALCONY

##### 1 GUEST BEDROOM

WITH ATTACHED TOILET & BALCONY

##### LIVING ROOM

WITH ATTACHED TERRACE

##### LOUNGE

##### DINING

##### KITCHEN

WITH UTILITY BALCONY

##### MANDIR

##### STORE/UTILITY ROOM

##### POWDER ROOM

SERVANT QUARTER + TOILET+ BALCONY

DEVELOPMENT

AMENITIES

RESIDENCES

LOCATION

DEVELOPER

TENTATIVE CARPET AREA	268SQMT	2885SQFT
BUILT UP AREA	319SQMT	3434SQFT
TENTATIVE SUPER AREA	376.42SQMT	4052.14SQFT



DEVELOPMENT

AMENITIES

RESIDENCES

LOCATION

DEVELOPER

# RADHE KRIPA HOUSING SOCIETY

## RADHE TOWER

### WEST SIDE ELEVATION





# RADHE KRIPA HOUSING SOCIETY

## RADHE TOWER

### GROUND FLOOR CAR PARKING

DEVELOPMENT

AMENITIES

RESIDENCES

LOCATION

DEVELOPER



**RADHE KRIPA**  
HOUSING AND INVESTMENT PVT. LTD.  
ADARSHNAGAR BIRGUNJ NEPAL



# RADHE KRIPA HOUSING SOCIETY

## RADHE TOWER

### FIRST FLOOR CAR PARKING

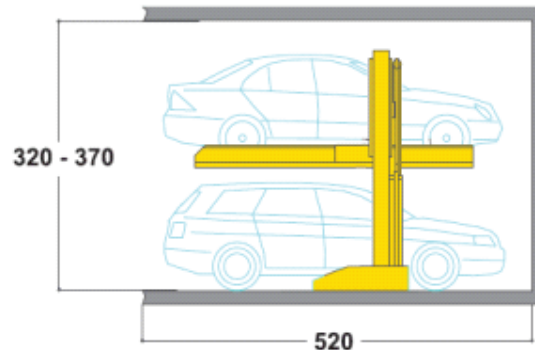
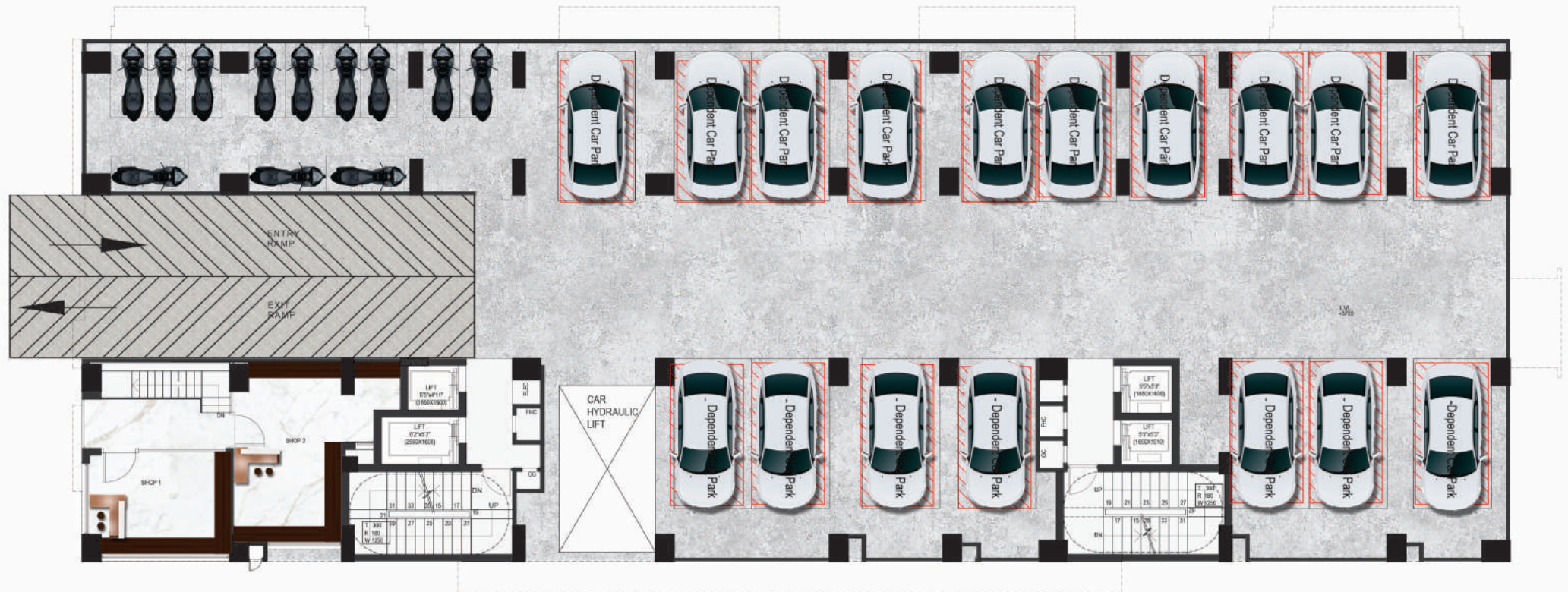
DEVELOPMENT

AMENITIES

RESIDENCES

LOCATION

DEVELOPER



**17 DEPENDENT PARKING**  
FOR DOUBLE PARKING AT ONE SPOT



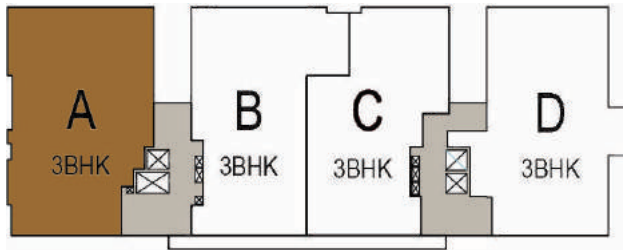
# RADHE KRIPA SOCIETY

## THE FLOOR PLANS

### KRIPA TOWER

K101, K201, K301, K401, K501  
K601, K701, K801 & K901

#### KEY PLAN



### UNIT TYPE 'A' 3BHK

**1 MASTER BEDROOM**  
WITH ATTACHED TOILET, DRESSER & BALCONY  
**2 BEDROOM**  
WITH ATTACHED TOILET & BALCONY  
**LIVING ROOM**  
**LOUNGE**  
**DINING**  
**KITCHEN**  
WITH UTILITY BALCONY & PANTRY  
**MANDIR**  
**STORE/UTILITY ROOM**  
**POWDER ROOM**  
**SERVANT QUARTER+ TOILET**



#### DEVELOPMENT

#### AMENITIES

#### RESIDENCES

#### LOCATION

#### DEVELOPER

TENTATIVE CARPET AREA	159.86SQMT	1720.88SQFT
BUILT UP AREA	191.76SQMT	2064.28SQFT
TENTATIVE SUPER AREA	226.28SQMT	2435.90SQFT



# RADHE KRIPA SOCIETY

## THE FLOOR PLANS

### KRIPA TOWER

#### K102, K202, K302, K402

#### KEY PLAN



#### UNIT TYPE 'B' 3BHK

##### 1 MASTER BEDROOM

WITH ATTACHED TOILET, DRESSER & BALCONY

##### 2 BEDROOM

WITH ATTACHED TOILET & BALCONY

##### LIVING ROOM

##### LOUNGE

##### DINING

##### KITCHEN

WITH UTILITY BALCONY

##### STORE/UTILITY ROOM

##### POWDER ROOM

#### DEVELOPMENT

#### AMENITIES

#### RESIDENCES

#### LOCATION

#### DEVELOPER

TENTATIVE CARPET AREA

151.45SQMT

1630.35SQFT

BUILT UP AREA

187.51SQMT

2018.53SQFT

TENTATIVE SUPER AREA

221.27SQMT

2381.97SQFT





# RADHE KRIPA SOCIETY

## THE FLOOR PLANS

### KRIPA TOWER

#### K103, K203, K303, K403

#### KEY PLAN



#### UNIT TYPE 'C' 3BHK

##### 1 MASTER BEDROOM

WITH ATTACHED TOILET, DRESSER & BALCONY

##### 2 BEDROOM

WITH ATTACHED TOILET & BALCONY

##### LIVING ROOM

##### LOUNGE

##### DINING

##### KITCHEN

WITH UTILITY BALCONY

##### MANDIR

##### STORE/UTILITY ROOM

##### POWDER ROOM



#### DEVELOPMENT

#### AMENITIES

#### RESIDENCES

#### LOCATION

#### DEVELOPER

TENTATIVE CARPET AREA	138.30SQMT	1488.79SQFT
BUILT UP AREA	168.67SQMT	1815.72SQFT
TENTATIVE SUPER AREA	199.03SQMT	2142.55SQFT



# RADHE KRIPA SOCIETY

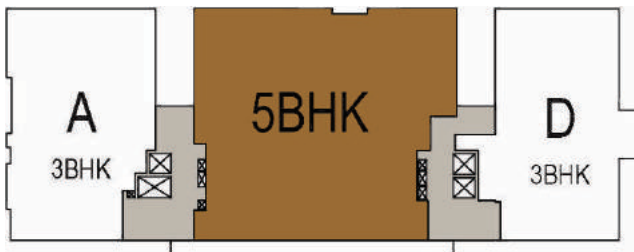
## THE FLOOR PLANS

### KRIPA TOWER

K502, K602, K702, K802

K902, 1002 & 1102

#### KEY PLAN



#### UNIT TYPE 5BHK

##### 1 MASTER BEDROOM

WITH ATTACHED TOILET, DRESSER & BALCONY

##### 2 BEDROOMS

WITH ATTACHED TOILET & BALCONY

##### 1 GUEST BEDROOM

WITH ATTACHED TOILET & BALCONY

##### 1 HOME THEATRE + BALCONY

##### LIVING ROOM

##### LOUNGE

##### DINING

##### KITCHEN

WITH UTILITY BALCONY

##### MANDIR

##### STORE/UTILITY ROOM

##### POWDER ROOM

##### SERVANT QUARTER + TOILET+ BALCONY



#### DEVELOPMENT

#### AMENITIES

#### RESIDENCES

#### LOCATION

#### DEVELOPER

TENTATIVE CARPET AREA

290.349SQMT

3125.59SQFT

BUILT UP AREA

353.46SQMT

3805SQFT

TENTATIVE SUPER AREA

417.08SQMT

4490SQFT





# RADHE KRIPA SOCIETY

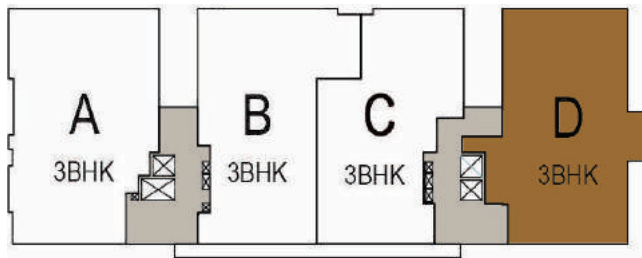
## THE FLOOR PLANS

### KRIPA TOWER

K104, K204, K304, K404

K604, K704, K804 & K904

#### KEY PLAN



### UNIT TYPE 'D' 3BHK

#### 1 MASTER BEDROOM

WITH ATTACHED TOILET, DRESSER & BALCONY

#### 2 BEDROOMS

WITH ATTACHED TOILET & BALCONY

#### LIVING ROOM

#### LOUNGE

#### DINING

#### KITCHEN

WITH UTILITY BALCONY

#### MANDIR

#### STORE/UTILITY ROOM

#### POWDER ROOM

#### SERVANT QUARTER+ TOILET



#### DEVELOPMENT

#### AMENITIES

#### RESIDENCES

#### LOCATION

#### DEVELOPER

TENTATIVE CARPET AREA	156.81SQMT	1688.05SQFT
BUILT UP AREA	182.28SQMT	1962.23SQFT
TENTATIVE SUPER AREA	215.09SQMT	2315.45SQFT



# RADHE KRIPA SOCIETY

## THE FLOOR PLANS

### KRIPA TOWER

#### K1101

#### KEY PLAN



#### PENTHOUSE TYPE A

**2 MASTER BEDROOMS**  
WITH ATTACHED TOILET, DRESSER & BALCONY  
**2 BEDROOMS**  
WITH ATTACHED TOILET, DRESSER & BALCONY  
**1 GUEST BEDROOM**  
WITH ATTACHED TOILET & BALCONY  
**1 KIDS BEDROOM**  
**DOUBLE HEIGHT LIVING ROOM**  
**LOUNGE**  
WITH ATTACHED TERRACE  
**DINING**  
**TERRACE**  
**KITCHEN**  
WITH UTILITY BALCONY & PANTRY  
**MANDIR**  
**STORE/UTILITY ROOM**  
**POWDER ROOM**  
**SERVANT QUARTER+TOILET**



DEVELOPMENT

AMENITIES

RESIDENCES

LOCATION

DEVELOPER

TENTATIVE CARPET AREA	281.791SQMT	3033.475QFT
BUILT UP AREA	381.38SQMT	4105.55SQFT
TENTATIVE SUPER AREA	450.03SQMT	4844.55SQFT



**PENTHOUSE 1 (LOWER FLOOR)**



**PENTHOUSE 1 (UPPER FLOOR)**



# RADHE KRIPA SOCIETY

## THE FLOOR PLANS

### TOWER KRIPA K1103

#### KEY PLAN



#### PENTHOUSE TYPE B

##### 2 MASTER BEDROOMS

WITH ATTACHED TOILET, DRESSER & BALCONY

##### 2 BEDROOMS

WITH ATTACHED TOILET, DRESSER & BALCONY

##### 1 GUEST BEDROOM

WITH ATTACHED TOILET & BALCONY

##### 1 KIDS BEDROOM

##### DOUBLE HEIGHT LIVING ROOM

##### LOUNGE

WITH ATTACHED TERRACE

##### DINING

##### TERRACE

##### KITCHEN

WITH UTILITY BALCONY & PANTRY

##### MANDIR

##### STORE/UTILITY ROOM

##### POWDER ROOM

##### SERVANT QUARTER+TOILET



#### DEVELOPMENT

#### AMENITIES

#### RESIDENCES

#### LOCATION

#### DEVELOPER

TENTATIVE CARPET AREA

278.52SQMT

2998.25SQFT

BUILT UP AREA

367.41SQMT

3955.15SQFT

TENTATIVE SUPER AREA

433.55SQMT

4667.15SQFT



PENTHOUSE 1 (LOWER FLOOR)



PENTHOUSE 1 (UPPER FLOOR)

## SPECIFICATIONS

RCC FRAMED STRUCTURE WITH SINGLE BASEMENT, STILT & 11 FLOORS 24 HOUR POWER BACKUP FOR APARTMENTS AND COMMON AREA FACILITIES

### FOYER/ LIVING/ DINING/MANDIR

FLOORING	SUPERIOR QUALITY VITRIFIED TILE FLOORING AND SKIRTING
WALLS & CEILING	PLASTIC EMULSION PAINT
FITTINGS & FIXTURES	SPLIT AC PROVISION, TELEVISION & TELEPHONE POINT

### BEDROOMS

FLOORING	SUPERIOR QUALITY TIMBER LAMINATED FLOORING OR EQUIVALENT AND SKIRTING IN MASTER BEDROOM SUPERIOR QUALITY VITRIFIED TILE FLOORING AND SKIRTING IN OTHER BEDROOMS
WALLS & CEILING	PLASTIC EMULSION PAINT IN ALL BEDROOMS
FITTINGS & FIXTURES	SPLIT AC PROVISION, TELEVISION & TELEPHONE POINT

### KITCHEN

FLOORING	SUPERIOR QUALITY CEREMIC TILES
WALLS	SUPERIOR QUALITY CEREMIC WALL TILE DADO UPTO CEILING
CEILING	PLASTIC EMULSION PAINT
FITTINGS & FIXTURES	EXHAUST FAN
UTILITY AREA	STAINLESS STEEL SINGLE BOWL SINK

### BALCONIES

FLOORING	SUPERIOR QUALITY ANTI SKID CERAMIC TILE FLOORINF & SKIRTING
WALLS	EXTERNAL GRADE TEXTURED PAINT
CEILING	PLASTIC EMULSION PAINT
PARAPET/RAILING	PARAPET WITH GRANITE COPING/MS & GLASS RAILING

### UTILITY BALCONY

FLOORING	SUPERIOR QUALITY ANTI SKID CERAMIC TILE FLOORINF & SKIRTING
WALLS & CEILING	EXTERNAL GRADE TEXTURED PAINT SUPERIOR QUALITY CERAMIC WALL TILE DADO ABOVE SINK COUNTER
FITTINGS & ACCESSORIES	STAINLESS STEEL DOUBLE BOWL SINK WITH DRAIN TRAY

### BATHROOMS/TOILETS

FLOORING	SUPERIOR QUALITY ANTI SKID CERAMIC TILE
WALLS	SUPERIOR QUALITY CERAMIC WALL TILE DADO UPTO CEILING
CEILING	EXTERNAL GRADE TEXTURED PAINT
COUNTER	GRANITE(IN ALL TOILETS)
FIXTURE	SHOWER PARTITION IN MASTER BATH
ACCESSORIES	EXHAUST FAN, 25LITRE CAPACITY GEYSER
FITTINGS	CHROMIUM PLATED FITTINGS & SANITARYWARE OF RE-PUTED MAKE



## SPECIFICATIONS

### STAIRCASE

TREAD & RISER	SUPERIOR QUALITY STONE
WALLS & CEILING	PLASTIC EMULSION PAINT

### COMMON AREAS

FLOORING	VITRIFIED TILES/GRANITE IN LOBBY & COMMON AREAS
WALLS & CEILING	SUPERIOR QUALITY CERAMIC WALL TILE DADO UPTO CEILING & PLASTIC EMULSION PAINT AS MENTIONED

### LIFTS

2 LIFTS (8PASSENGER CAPACITY) IN EACH SERVICE CORE

### CAR PARKING

COVERED CAR PARKS IN STILT FLOOR & FIRST FLOOR-2 CAR PARKING FOR EACH FLAT

ADDITIONAL SURFACE CAR PARKING FOR VISITORS ON GROUND FLOOR LEVEL

### SECURITY

EACH APARTMENT LINKED TO MAIN SECURITY CABIN VIA INTERCOM

### LANDSCAPE

DESIGNER LANDSCAPING

### DOORS & WINDOWS

MAIN DOOR	TIMBER FRAME, TIMBER ARCHITRAVE AND SHUTTERS WITH BOTH SIDE MASONITE SKIN
BEDROOM DOORS	TIMBER FRAME, TIMBER ARCHITRAVE AND SHUTTERS WITH BOTH SIDE MASONITE SKIN
TOILET DOORS	TIMBER FRAME, TIMBER ARCHITRAVE AND SHUTTERS WITH OUTSIDE MASONITE SKIN AND INSIDE LAMINATE
OTHER DOORS	SPECIALLY DESIGNED HEAVY-DUTY POWDER COATED ALUMINUM EXTRUDED FRAMES
WINDOWS	HEAVY-DUTY POWDER COATED ALUMINUM DOUBLE GLAZED WINDOWS & VENTILATORS UPVS

### VASTU COMPLIANCE

MAIN INTERNAL ROAD IS IN NORTH-EAST

SWIMMING POOL IS SITUATED IN NORTH-EAST

MANDIR IS IN NORTH-EAST

HEAVIEST SOUTH WEST

KITCHEN OF ALL FLATS IN SOUTH EAST

MASTER BEDROOM OF ALL FLATS IN SOUTH WEST

WC IN ALL TOILETS PLACED IN NORTH SOUTH POSITION



thank  
you



**RADHE KRIPA**  
HOUSING AND INVESTMENT Pvt. Ltd.  
ADARSHNAGAR BIRGUNJ NEPAL